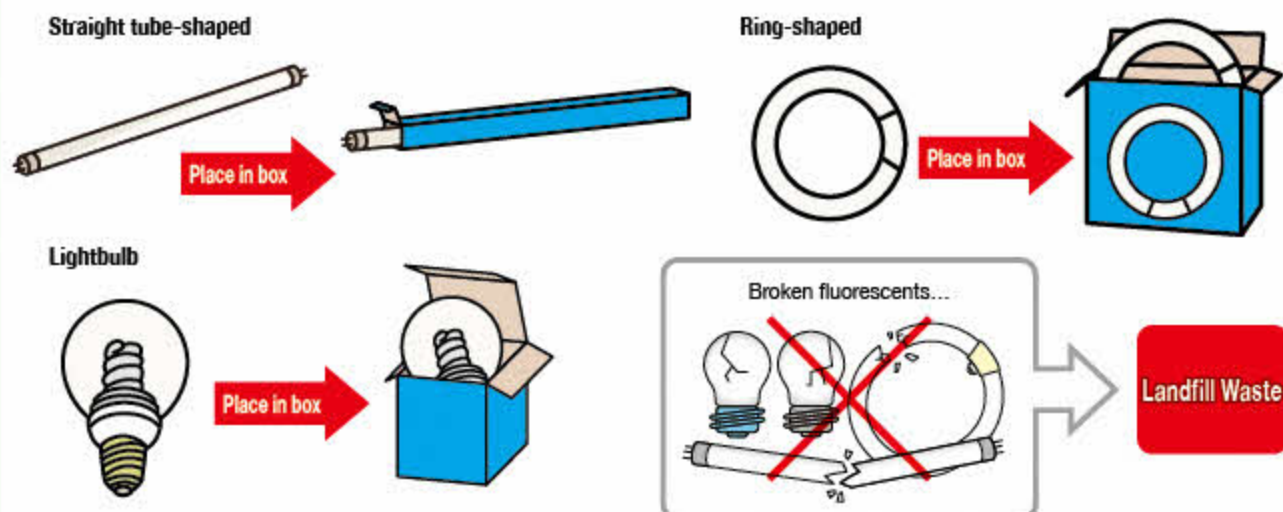


## » Used Fluorescent Lights ( Recycle )

**There is no designated bag.** Place in the box it came in, and put out on the same day that Landfill Waste is collected. **Do not place in a Landfill Waste Bag.** If you don't have the box it came in, place it in a box that will protect it from breaking, and write "*hai-keikōkan*" on the box. You don't need to write your name.

Dispose of broken fluorescent lights in a Landfill Waste Bag.

**LEDs cannot be recycled.** Treat plastic LEDs as Shredded Waste, and glass LEDs as Landfill Waste. Some stores collect old LEDs. Contact stores directly for more information.



## » Disposable Chopsticks ( Recycle )

Place in collection boxes (**wooden disposable chopsticks only**) on the first floor of Izumo City Hall, the city's administrative centers, and community centers.

**Bamboo and lacquered chopsticks are Burnable Waste.**

● Wooden disposable chopsticks



Bamboo or lacquered chopsticks...



Burnable Waste

## » Cooking Oil ( Recycle )

Pour cooking oils (plant-based oils only) back into the container they came in, and bring to the basement of City Hall, administrative centers, or community centers to dispose of in the collection tanks there.

The tanks are available 8:30 - 17:00 on weekdays.

(Hikawa area facilities are available on weekends only, 8:30 - 17:00)

**Do not put machinery oil, animal-based oils (lard, etc.), or oil containing food scraps into the tanks.**

